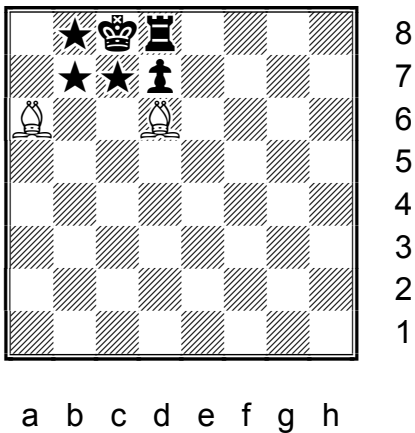


Chapter Four – Checkmate – Lesson 49



Two bishops can create the bishop box mate, by covering all the squares in the vicinity of the king that are still open. The light bishop covers b7 and c8, the dark bishop covers b8 and c7. Traitors or assistants are needed to cover the remaining squares. The rook on d8 and the pawn on d7 are the traitors.

Bible verse: Eph 4:27 Neither give place to the devil.

Christian lesson: Allow Satan no place in your life.